

Mesa County Workforce Center

Workforce Development *Is* Economic Development

Industry Profile



Mining, Quarrying, Oil and Gas Extraction

3rd Quarter 2022



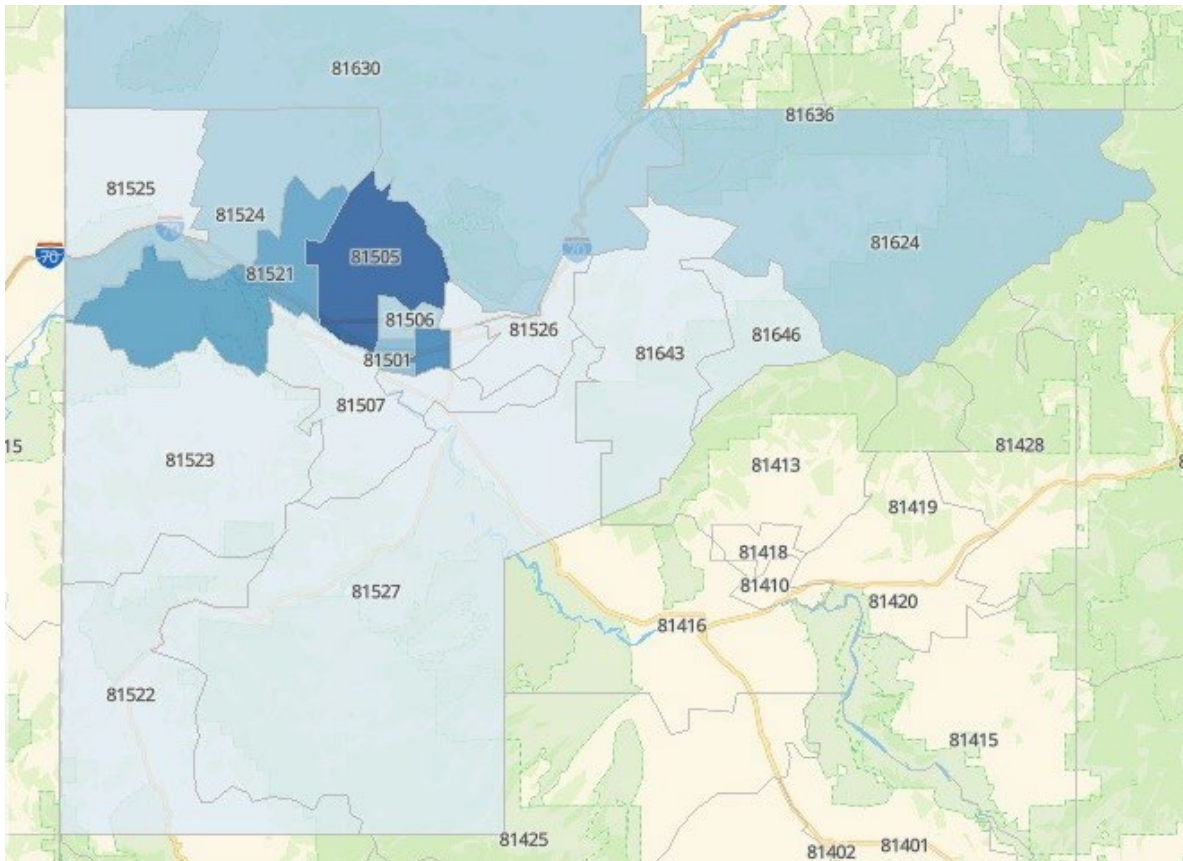
A proud partner of the
americanjobcenter
network

Mesa County Workforce Center
512 29 1/2 Road, Grand Junction

970 248 7560
www.mcwfc.us

Mining, Quarrying, Oil and Gas Extraction

The Energy Industry makes up 1.8% of Mesa County's total employment. The map below shows employment concentration in Mesa County. In 2021, Mesa County had 1,338 jobs available in the Energy Industry. We expect that number to slightly decrease in 2022.



Note the location quotient for each sector. A location quotient of 1.00 represents the average concentration for Mining, Quarrying, Oil and Gas Extraction.

ZIP	ZIP Name	Avg. Earnings Per Job	2021 Location Quotient	2022 Jobs
81505	Grand Junction	\$106,035	12.07	493
81504	Grand Junction	\$97,255	14.37	295
81521	Fruita	\$98,400	8.02	142
81501	Grand Junction	\$95,607	1.75	114
81624	Collbran	\$127,638	34.63	54
81506	Grand Junction	\$153,034	1.63	37
81524	Loma	\$93,466	17.01	31
81630	De Beque	\$93,466	19.35	19
81503	Grand Junction	\$135,608	1.23	14

Top Regional Businesses

Business Name	Industry Name	Business Size
Halliburton Energy Services	Support Activities for Oil and Gas Operations	85
Calfrac Well Services Corp	Support Activities for Oil and Gas Operations	75
Cudd Energy Services	Support Activities for Oil and Gas Operations	55
Helmerich & Payne International	Support Activities for Oil and Gas Operations	50

Source: DatabaseUSA.com Business Level Data

Top 10 occupations in Mesa County and five year outlook

Description	Employed in Industry (2021)	Employed in Industry (2022)	Employed in Industry (2027)	% Change (2022 - 2027)	% of Total Jobs in Industry (2021)	Median Hourly Earnings	Typical Entry Level Education	Typical On-The-Job Training
Service Unit Operators, Oil and Gas	270	235	147	(38%)	20.1%	\$23.09	No formal educational credential	Moderate-term on-the-job training
Roustabouts, Oil and Gas	151	134	88	(35%)	11.2%	\$17.72	No formal educational credential	Moderate-term on-the-job training
First-Line Supervisors of Construction Trades and Extraction Workers	95	85	59	(30%)	7.0%	\$29.46	High school diploma or equivalent	None
Heavy and Tractor-Trailer Truck Drivers	42	40	31	(22%)	3.1%	\$22.40	Postsecondary nondegree award	Short-term on-the-job training
Petroleum Engineers	41	37	28	(24%)	3.1%	\$39.67	Bachelor's degree	None
General and Operations Managers	36	34	27	(19%)	2.7%	\$45.56	Bachelor's degree	None
Operating Engineers and Other Construction Equipment Operators	29	27	18	(32%)	2.2%	\$22.09	High school diploma or equivalent	Moderate-term on-the-job training
Sales Representatives of Services, Except Advertising, Insurance, Financial Services, and Travel	28	25	15	(38%)	2.1%	\$28.09	High school diploma or equivalent	Moderate-term on-the-job training
Office Clerks, General	27	24	17	(29%)	2.0%	\$19.20	High school diploma or equivalent	Short-term on-the-job training

Rotary Drill Operators, Oil and Gas	27	24	19	(24%)	2.0%	\$27.80	No formal educational credential	Moderate-term on-the-job training
-------------------------------------	----	----	----	-------	------	---------	----------------------------------	-----------------------------------

The occupations listed above show negative growth over the next 5 years.

Western Slope Competitive Wage Analysis

Description	2021 Resident Workers	Avg. Annual Openings	Applicants per job opening	Pct. 10 Hourly Earnings	Pct. 25 Hourly Earnings	Median Hourly Earnings	Pct. 75 Hourly Earnings	Pct. 90 Hourly Earnings
General and Operations Managers	2,035	205	9.9	\$22.07	\$30.85	\$44.83	\$62.74	\$90.62
Petroleum Engineers	81	4	18.4	\$34.54	\$38.69	\$45.76	\$71.44	\$103.41
Sales Representatives of Services, Except Advertising, Insurance, Financial Services, and Travel	861	92	9.3	\$13.99	\$17.93	\$27.09	\$43.03	\$57.70
Office Clerks, General	2,310	268	8.6	\$13.23	\$14.60	\$19.75	\$23.52	\$29.58
First-Line Supervisors of Construction Trades and Extraction Workers	1,345	118	11.4	\$20.72	\$26.34	\$30.41	\$39.17	\$46.80
Operating Engineers and Other Construction Equipment Operators	934	92	10.2	\$17.11	\$20.16	\$22.40	\$24.33	\$29.25
Rotary Drill Operators, Oil and Gas	30	3	10.7	\$26.10	\$27.32	\$27.80	\$41.25	\$46.21
Service Unit Operators, Oil and Gas	379	35	11.0	\$18.06	\$19.02	\$24.51	\$31.19	\$37.64
Roustabouts, Oil and Gas	213	19	11.1	\$17.16	\$17.54	\$18.06	\$23.29	\$29.28
Heavy and Tractor-Trailer Truck Drivers	1,872	193	9.7	\$16.56	\$21.16	\$22.63	\$27.60	\$35.23

Counties included in Western Slope: Mesa, Garfield, Montrose, and Delta Counties.

This table shows the relationship between the available labor pool and current employment in the key occupations. The average and percentile salary ranges are actual wage levels for those occupations, across all industry groups within the regions. In the table above, the wage rates highlighted in yellow represent wage scales which may have to be paid to new hires based on low or high regional demand for each of the key occupations.